

# OPSRRA'S OTTER POINT & SHIRLEY & JORDAN RIVER NEWSLETTER January 2014

**WISHING EVERYONE**



## **CELEBRATING 10 YEARS OF PUBLICATION!**

The Otter Point & Shirley Residents & Ratepayers Association (OPSRRA) is a registered non-profit society with an elected Board of Directors and strives to present the points-of-view of its members to local government. OPSRRA was founded in 1992 and has a membership of over **400**. Any resident or property owner in Shirley, Jordan River and Otter Point Official Community Plans boundaries who are age 18 or over are eligible for membership.

**Lifetime memberships cost \$5.00 per person** and are available from OPSRRA directors—see our web site ([www.opsrra.ca](http://www.opsrra.ca)) for further information and on-line registration. Associate (non-voting) memberships are available for persons who do not reside or own property in Shirley or Otter Point, but who wish to support the Association.

Our society's purpose is to:

- Ensure that the development of the communities of Shirley, Jordan River and Otter Point takes place in an orderly way and in the best interests of its residents.
- Co-operate with local government and other public bodies in the furtherance of the objectives of the society and benefits to the community.
- Concern itself with the performance of government agencies.
- Encourage citizens to stand for public office.
- Promote community spirit and sense of identity by organizing or supporting appropriate activities.

Are you an OPSRRA member? Do you want to receive the OPSRRA newsletter and notice of meetings directly to your email address? OPSRRA now emails this newsletter to over **300** of our members as well as local elected representatives, media and archival organizations. Contact Arnie Campbell at: [opsrra@gmail.com](mailto:opsrra@gmail.com) if you want to receive this membership service.

## **OPSRRA's EXECUTIVE AND DIRECTORS**

**Fiona McDannold** President

**Phone:** 250-646-2730

**Bob Philips**

Vice-President

**Phone:**

250-642-3297

**Brenda Mark**

Treasurer

**Phone:**

250-646-2598

**Sandy Barta** Director

**Arnie Campbell** Director

**Phone:**

250-642-3113

**Brooke Fader** Director

**Chris Knoglinger** Director

**Phone:**

250-646-2911

**Marika Nagasaka** Director

**Phone:** 250-642-2133

Contact any OPSRRA director at: [opsrra@gmail.com](mailto:opsrra@gmail.com)

## IN THIS ISSUE

### Contents

1. UPCOMING MEETINGS AND EVENTS.....	3
2. IS DUMPING A PROBLEM IN OUR COMMUNITY?.....	10
3. YOUR PROPERTY ASSESSMENT AND APPEAL DEADLINE.....	10
4. NEW BC WATER SUSTAINABILITY ACT.....	12
5. PROVINCIAL RURAL HIGHWAY SAFETY AND SPEED REVIEW.....	12
6. WHERE IN THE JUAN DE FUCA?.....	12
7. ROBBIE BURNS NIGHT CONCERT WITH CELTIC REFLECTIONS.....	13
8. WILL THE LEECH WATERSHED CLOSE TO THE PUBLIC?.....	14
9. APPOINTMENTS TO JDFEA ADVISORY COMMISSIONS.....	17
10. THE DIFFERENCE BETWEEN JDFEA PARKS & RECREATION AND SEAPARC.....	17
11. SHIRLEY FIRE PROTECTION SOCIETY AGM.....	18
12. SHIRLEY FIRE RESCUE & EMERGENCY RESPONSE COMMISSION.....	19
13. REGIONAL DIRECTOR'S GRANTS-IN-AID.....	19
14. UPDATE: SHIRLEY & JORDAN RIVER OCP.....	20
15. UPDATE: JDF ADMIN SERVICES BUILDING.....	21
16. DID YOU KNOW THAT ... ..	21
17. OPSRRA SMALL BUSINESS LISTINGS.....	22
18. BACK ISSUES OF THE OPSRRA NEWSLETTER.....	24

## 1. UPCOMING MEETINGS AND EVENTS

Contact Arnie Campbell at: [opsrra@gmail.com](mailto:opsrra@gmail.com) or **250-642-3113** to have your community event listed in our monthly community events calendar here and on our website.

**2014**

**HAPPY NEW YEAR!**

Wednesday  
January 1

**Annual Otter Point  
Polar Bear Swim**  
Sponsored by the Otter  
Point Volunteer Fire  
Department

Register by 11:30 a.m.  
12:00 p.m. cannon start  
Whiffen Spit Park  
Sooke BC



Saturday  
November 2

**Juan de Fuca Community Trails Society**  
**Hike to Mystic Beach**  
9:00 a.m.

Meet at the parking lot at China Beach Provincial Park.

A moderate hike along the Straits of Juan de Fuca Marine Trail to the, well ... mystic Mystic Beach. Enjoy signature west coast forest and wild beaches. Views of the Straits of Juan de Fuca and the Olympic Mountains.

Bring a lunch, and dress for the weather.

Phone Rosemary Jorna, 250-642-2767  
or email [sid2767@shaw.ca](mailto:sid2767@shaw.ca) for details.

Web site:

[www.jdfcommunitytrails.ca](http://www.jdfcommunitytrails.ca)

Tuesday  
January 7

**Juan de Fuca Parks & Recreation Commission**  
**Monthly Meeting**

3:00 p.m.

**Note: Location  
change**

JDF Electoral Local Area Services Building  
3-7450 Butler Road, Otter Point, BC

Tuesday  
January 7

**Juan de Fuca Emergency Services**  
**Monthly Meeting**

7:00 p.m.

JDF Search & Rescue Campus Training Building  
2028C Idlemore Road Sooke BC

<p>Wednesday January 8</p> <p><b>Note: Meeting cancelled</b></p>	<p><b>Sooke &amp; Electoral Area Parks &amp; Recreation Commission (SEAPARC)</b>  <b>Monthly Meeting</b>  7:00 p.m.  Board Room  SEAPARC Leisure Complex  2168 Philips Road, Sooke BC</p> <p>See newsletter item below</p>
<p>Wednesday January 8</p>	<p><b>Shirley Community Association</b>  <b>Membership meeting</b>  7:30 p.m.  Shirley Community Hall</p>
<p>Saturday January 11</p>	<p><b>Shirley Community Association</b>  <b>Soup Lunch</b>  Noon to 1:30 p.m.  Shirley Community Hall</p>
<p>Saturday January 11</p>	<p><b>Juan de Fuca Electoral Area Parks &amp; Recreation Advisory Commission / Juan de Fuca Community Trails Society</b>  <b>Hike East Sooke Coppermine Loop</b>  9:00 a.m.</p> <p>Meet at the William Simmons Memorial Park (Poirier Lake) parking lot to car pool to the trail head. (Turn into the Sooke Business Park at 3220 Otter Point Road; the parking lot is behind the berm immediately to the left.)  Or, meet at the Iron Mine Bay (East Sooke) parking lot at 9:35 a.m.</p> <p>This 8 km hike proceeds down the coast trail and inland to the Coppermine. The loop returns via the shoulder of Mt. Maquire and features mossy bluffs and mixed forest.</p> <p>Bring water, snacks, and dress for the weather.</p> <p>Contact Sid Jorna:  Phone: 250-642-2767 or  email: <a href="mailto:jdf.cts@gmail.com">jdf.cts@gmail.com</a> for more information</p>
<p>Wednesday January 15</p>	<p><b>Shirley Fire Rescue &amp; Emergency Response Commission</b>  <b>Monthly meeting</b>  7:00 p.m.  Shirley Community Hall</p> <p>Officer election.</p> <p>See newsletter item below.</p>

---

Tuesday  
January 21

**Note:** Location  
change

**OPSRRA Board of Directors**

**Monthly Meeting**

**Members welcome!**

7:30 p.m.

Services Building meeting room  
Sooke Region Museum  
2070 Philips Road Sooke BC

Agenda available on request.

Contact [opsrra@gmail.com](mailto:opsrra@gmail.com)

---

Tuesday  
January 21

**Note:** Location  
change

**JDF Electoral Area Land Use Committee (LUC)  
Meeting**

7:00 p.m.

JDF Electoral Local Area Services Building  
3-7450 Butler Road, Otter Point, BC

Obtain the agenda the Friday before the meeting on the  
CRD website at:

[http://www.crd.bc.ca/agendas/juandefucalandusecom\\_/index.htm](http://www.crd.bc.ca/agendas/juandefucalandusecom_/index.htm)

Select the year and month of the agenda you wish to read.

Staff reports available:

[http://www.crd.bc.ca/reports/juandefucalandusecom\\_/2013\\_/index.htm](http://www.crd.bc.ca/reports/juandefucalandusecom_/2013_/index.htm)

---

Wednesday  
January 22

**Shirley & Jordan River Official Community Plan Review  
Meeting**

7:00 to 9:00 p.m.

Shirley Community Hall

Tania Tripp, a biologist with Madrone Environmental  
Services, the consulting firm hired to undertake a Sensitive  
Ecosystem Inventory, will give a presentation on  
methodology.

See newsletter item below

---

---

Saturday  
January 25

**Robbie Burns Night  
Concert with Celtic Reflections**

7:30 to 9:30 p.m.

Shirley Community Hall

Tickets \$15 each, or 2 for \$25

only 70 tickets available:

- email to [boogies@briarmoon.ca](mailto:boogies@briarmoon.ca)
- FB Message to Shirley Hill Boogies (pay by PayPal)
- Residents of the Shirley subdivision: ticket drop-off may be possible. (Just message or email to arrange)
- Shirley Delicious (Shirley)
- The Stick in the Mud (Sooke)
- Shoppers Drug Mart (Sooke)

See newsletter item below

---

Sunday  
January 26

**Shirley & Jordan River Official Community Plan Review  
Community Information Open House**

1:00 to 4:00 p.m.

Shirley Community Hall

Complimentary Refreshments 12:00 to 1:00 pm

The local Girl Guides will serve veggie burgers and hot dogs. Pastries and coffee provided by Shirley Delicious.

CRD staff and members of the Shirley and Jordan River Citizens' Committee in attendance to answer questions.

- Community Mapping exercise;
- Opportunity to comment on the local issues identified by the Citizens' Committee;
- Background information and maps.

See newsletter item below

---

Sunday  
January 26

**Sooke Region Historical Society  
Annual General Meeting**

2:00 p.m.

Services Building meeting room

Sooke Region Museum

2070 Philips Road Sooke BC

- Board election
  - Financial report
  - President's Report
  - Executive Director's Report
  - Historian's Report
  - School Program Report
-

---

Wednesday  
January 29

**Juan de Fuca Community Land Trust**

**General Meeting**

7:30 p.m.

Otter Point Fire Hall

3727 Otter Point Road, Otter Point BC

The first public meeting for the JDF Community Land Trust Society. The Trust's goal is to raise enough money to purchase the Admiral's Forest in Otter Point.

More information about the society is on their web site:

<http://www.jdflandtrust.ca/>

---

Saturday  
February 1

**Juan de Fuca Community Trails Society**

**Hike Aylard Farm to Beachey Head**

9:00 a.m.

Meet at the Aylard Farm parking lot in East Sooke Park

Explore the coast trail featuring magnificent views of the Straits and Olympic Mountains beyond. See the petroglyphs and possibly large sea mammals.

Bring a lunch and dress for the weather.

Contact Rosemary Jorna, [sid2767@shaw.ca](mailto:sid2767@shaw.ca) for details.

Web site:

[www.jdfcommunitytrails.ca](http://www.jdfcommunitytrails.ca)

---

Tuesday  
February 4

**Juan de Fuca Emergency Services**

**Monthly Meeting**

7:00 p.m.

JDF Search & Rescue Campus Training Building

2028C Idlemore Road Sooke BC

---

Wednesday  
February 5

**Sooke & Electoral Area Parks & Recreation  
Commission (SEAPARC)**

**Monthly Meeting**

6:30 p.m.

Board Room

SEAPARC Leisure Complex

2168 Philips Road, Sooke BC

- Regular meetings of the Commission take place at SEAPARC on the first Wednesday of the month and are open to the public.
- Meetings are also held at the call of the Chair.

Agendas and Minutes posted for each meeting at:

<http://www.crd.bc.ca/seaparc/commission.htm>

---

---

Saturday  
February 8

**Juan de Fuca Electoral Area Parks &  
Recreation Advisory Commission / Juan de Fuca  
Community Trails Society  
Sooke Potholes Park River Walk**  
9:00 a.m.

Meet at the William Simmons Memorial Park (Poirier Lake) parking lot to car pool to the trail head. (Turn into the Sooke Business Park at 3220 Otter Point Road; the parking lot is behind the berm immediately to the left.)  
or meet at Barnes Station at 9:30 am.

A moderate 8km walk along the paths by the Sooke River. The walk starts at the ruins of Green Canyon and proceeds to the Ripple Rock swimming beach. Marvel at the geology and beauty of the river.

Contact Rosemary Jorna:  
Phone: 250-642-2767 or  
email: [jdf.cts@gmail.com](mailto:jdf.cts@gmail.com) for more information

---

Sunday  
February 9

**OPSRRA Membership Meeting**  
2:00 to 4:00 p.m.

Shirley Community Hall

Agenda and additional detail in the February newsletter.

---

Mondays

**Karate for all ages**

6:30 to 8:00 p.m.

Shirley Community Hall

Contact Alida Long: 250-642-4631

---

Mondays

**Pilates**

10:00 to 11:00 a.m.

Shirley Community Hall

Level 1 class (suitable for beginners)

Contact Sandra Smith:  
website: [www.svakayoga.com](http://www.svakayoga.com)  
email: [svakayoga@gmail.com](mailto:svakayoga@gmail.com)

---

Tuesdays

**Malahat Art Space**

1:00 to 3:00 p.m.

Malahat Farm, 2675 Anderson Road

Held in the big garage to the left as you come up the drive.

Time to do art and crafts together, learn from each other and have fun.

Everyone welcome

For more information:  
email [kwoods@pacificcoast.net](mailto:kwoods@pacificcoast.net), or [vero@malahatfarm.com](mailto:vero@malahatfarm.com)  
or call 250-642-0393 or 250-642-6868

---



---

Thursdays      **Shirley Quilters and Crafters**  
10:00 a.m. to 4:00 p.m.  
Shirley Community Hall  
  
Everyone welcome  
  
Contact Christien Shipton: 250-646-2687

---

Saturdays      **Pilates**  
9:30 am  
Shirley Community Hall  
  
Level 1 class (suitable for beginners)  
  
Contact: Sandra Smith  
website: [www.svakayoga.com](http://www.svakayoga.com)  
email: [svakayoga@gmail.com](mailto:svakayoga@gmail.com)

---

Thursdays &  
Sundays      **Nia Dance / Movement Class**  
**Thursdays:** 6:30 to 8:00 p.m.  
**Sundays:** 11:00 a.m. to 12:15 p.m.  
Shirley Community Hall  
  
Contact Melody Kimmell:  
250-646-2995  
[movingmelody@gmail.com](mailto:movingmelody@gmail.com)

---

## 2. IS DUMPING A PROBLEM IN OUR COMMUNITY?

Garbage dumping is an on-going problem and is likely to never go away completely. Dumping is a topic that comes up regularly at our OPSRRA membership and Board of Directors' meetings.

We would like to get a sense from our members about the following:

- Is there is concern about garbage dumping in our community?
- Have residents have seen an increase in dumping in the last year?
- What are our members seeing in their communities?
- Is there a need for our association to pursue the problem?



Share your dumping observations, photos and dump site locations, your thoughts about how to deal with our garbage-dumping problem with OPSRRA, by emailing [opsrra@gmail.com](mailto:opsrra@gmail.com) or by contacting one of your OPSRRA directors.

## 3. YOUR PROPERTY ASSESSMENT AND APPEAL DEADLINE

Your 2013 property assessment is used to determine your 2014 property taxes. It will be mailed on December 31, 2013 and is available on the BC Assessment website Thursday, January 2, 2014. If you do not receive your property assessment by January 20, 2014 call toll-free 1-800-668-0086 to request a copy.

The BC Assessment Authority is responsible for evaluating all properties in British Columbia. According to BC Assessment, the Capital Area Assessment Office serviced over 141,000 properties in 2013 for a total value of over \$91.6 billion in an area that comprises the Capital Regional District's 13 incorporated municipalities and three electoral areas--including the Juan de Fuca Electoral Area. Approximately three quarters of the total value of the assessments is for residential properties (which includes single family dwellings, manufactured homes, apartment buildings, etc.) with an average residential property value of \$514,000.

Property valuation is BC Assessment Authority's best guess of your property's value as of July 1, 2013 based on recent, comparable property sales and other assessments in your neighbourhood. Additional factors that BC Assessment may consider includes your home's age, location, quality of construction, current condition and recent improvements. This valuation will be used by the local taxing authorities to determine your 2014 property tax. If you feel that the valuation is incorrect, or you want more information on how they arrived at your property assessment, contact the local BC Assessment Authority office.

BC Assessment's website provides a listing of property assessments and sales to help property owners understand their property's market value and provide comparable sales information. Go to [www.bcassessment.ca](http://www.bcassessment.ca) and click on the e-valueBC link. Copies of neighbourhood assessments are also available at local area offices and most municipal halls and government agent's offices across the province.

Property owners wishing to appeal their property assessment must do so in writing. An on-line version of the complaint form, as well as a step-by-step handbook is available on their assessment appeal web site:

<http://www.bcassessment.ca/public/Pages/AppealingyourAssessment.aspx>

**Note:** The deadline to appeal your 2013 property assessment is midnight on Friday, January 31, 2014.

Contact information for the Greater Victoria Office:

Phone: 250-479-7131  
Toll Free: -800-990-1159  
Fax: 250-479-1849  
Email: [capital@bcassessment.ca](mailto:capital@bcassessment.ca)

Office Address:

102-3350 Douglas Street  
Victoria, BC V8Z 7X9

The Capital Office Management Team:

**Assessor:** Reuben Danakody  
**Deputy Assessor:** Gerry Marolla  
**Deputy Assessor:** Greg Wood  
**Acting Office Supervisor:** Janie Bemister

Web site:

[www.bcassessment.ca](http://www.bcassessment.ca)

Beginning January 2, 2014, this web site provides a wide range of information related to this year's assessments.

#### 4. **NEW BC WATER SUSTAINABILITY ACT**

The OPSRRA November Newsletter reported on Provincial Government proposals that form the basis of our new *Water Sustainability Act* (WSA). We will not see the draft WSA legislation until it's tabled in the Legislature. To help members think about the impact of the new WSA on our communities, our website will soon contain a detailed report ([www.opsrra.ca](http://www.opsrra.ca)) under the heading Water and Related issues. The report examines:

- The models of in-stream or environmental flows;
- Government approaches being used in other jurisdictions;
- How the current proposals may be applied to our local watersheds, water supplies and governance.

The following government website has the proposals and technical data, and all submissions made in the *What We've Heard* section of their website:

[www.engage.gov.bc.ca/watersustainabilityact](http://www.engage.gov.bc.ca/watersustainabilityact)

OPSRRA will conduct a survey in February, 2014, regarding the possible implications of the new Act on our rural communities.

#### 5. **PROVINCIAL RURAL HIGHWAY SAFETY AND SPEED REVIEW**

The Province is conducting a province-wide public consultation regarding safety and speed limits on B.C.'s rural highways. The results will be used to identify and prioritize proposed highway and safety improvements. The four topics they are most interested in are speed limits, slower moving vehicles, wildlife hazards and winter tires.

Given the repeated concerns raised by OPSRRA and others in the community about the safety of West Coast Road (Highway 14), this may be an opportunity to communicate with government. Details about the review and how to participate can be found in the following on-line document:

<http://engage.gov.bc.ca/safetyandspeedreview/files/2013/11/Safety-Speed-Discussion-Guide1.pdf>

#### 6. **WHERE IN THE JUAN DE FUCA?**

Okay, let's have some fun. We provide a picture of something somewhere in the Juan de Fuca Electoral Area and you tell us where it's located, what it is, or why it's significant. No prize for the winner(s), but we'll give you credit for your "find" if you're okay with us using your name. The answer will be in next month's newsletter.

Here is this month's **Where in the Juan de Fuca?** The bottom of the building showing in the background may be a clue.





Do you have a picture you would like to submit to **Where in the Juan de Fuca?**  
 Send it to us at [opsrra@google.com](mailto:opsrra@google.com) along with an explanation of where, what and why and we'll consider it for a future contest.

## 7. **ROBBIE BURNS NIGHT CONCERT WITH CELTIC REFLECTIONS**

The organizers of the Shirley Hill Boogies submitted the following;

At the end of the month, Saturday the 25, 2014, to be exact, we'll be having our next boogie. On Robbie Burns' night please join us in a fun filled boogie dancing/listening to the tunes of our local Celtic Reflections.

Celtic Reflections is Patrick and Patricia De Gabrielle. They are a multi-instrumental and vocal Celtic/Folk/World duo. The wide range of instruments they play include Celtic harp, mandolins, whistles, the fiddle, bass peddles, classic/acoustic guitar, bodhran, castanets and that's not all! Both have backgrounds in theatre and they have been performing together both around Canada and the internationally for over 15 years. Their repertoire includes Latin, classical, jazz, flamenco, blues, gypsy and of course many styles of Celtic music. Come out for our opening boogie of 2014 with great Celtic music for Robbie Burns' Day!

**When:** Saturday, January 15, 2014  
 7:30 to 9:30 PM  
 Doors open at 7:00 PM

**Where:** Shirley Community Hall ([www.shirleycommunity.org](http://www.shirleycommunity.org))  
20km NW of Sooke on West Coast Road at Sheringham Point Road.

**Tickets:** \$15 each, or  
2 for \$25  
70 tickets available

**Purchase tickets:**

- email to [boogies@briarmoon.ca](mailto:boogies@briarmoon.ca)/FB
- Message to Shirley Hill Boogies (pay by PayPal)
- Ticket delivery for residents of the Shirley subdivision may be possible; just message or email to arrange.
- Shirley Delicious (Shirley)
- The Stick in the Mud (Sooke)
- Shoppers Drug Mart (Sooke)
- Our Website ([www.briarmoon.ca/SHB/](http://www.briarmoon.ca/SHB/))

**More information:**

**Celtic Reflections:** [www.facebook.com/celtic.reflections/](http://www.facebook.com/celtic.reflections/) or  
[www.reverbNation.com/celticreflections/](http://www.reverbNation.com/celticreflections/)

**Shirley Hill Boogies:** [www.facebook.com/ShirleyHillBoogies/](http://www.facebook.com/ShirleyHillBoogies/) or  
[www.briarmoon.ca/SHB/](http://www.briarmoon.ca/SHB/)

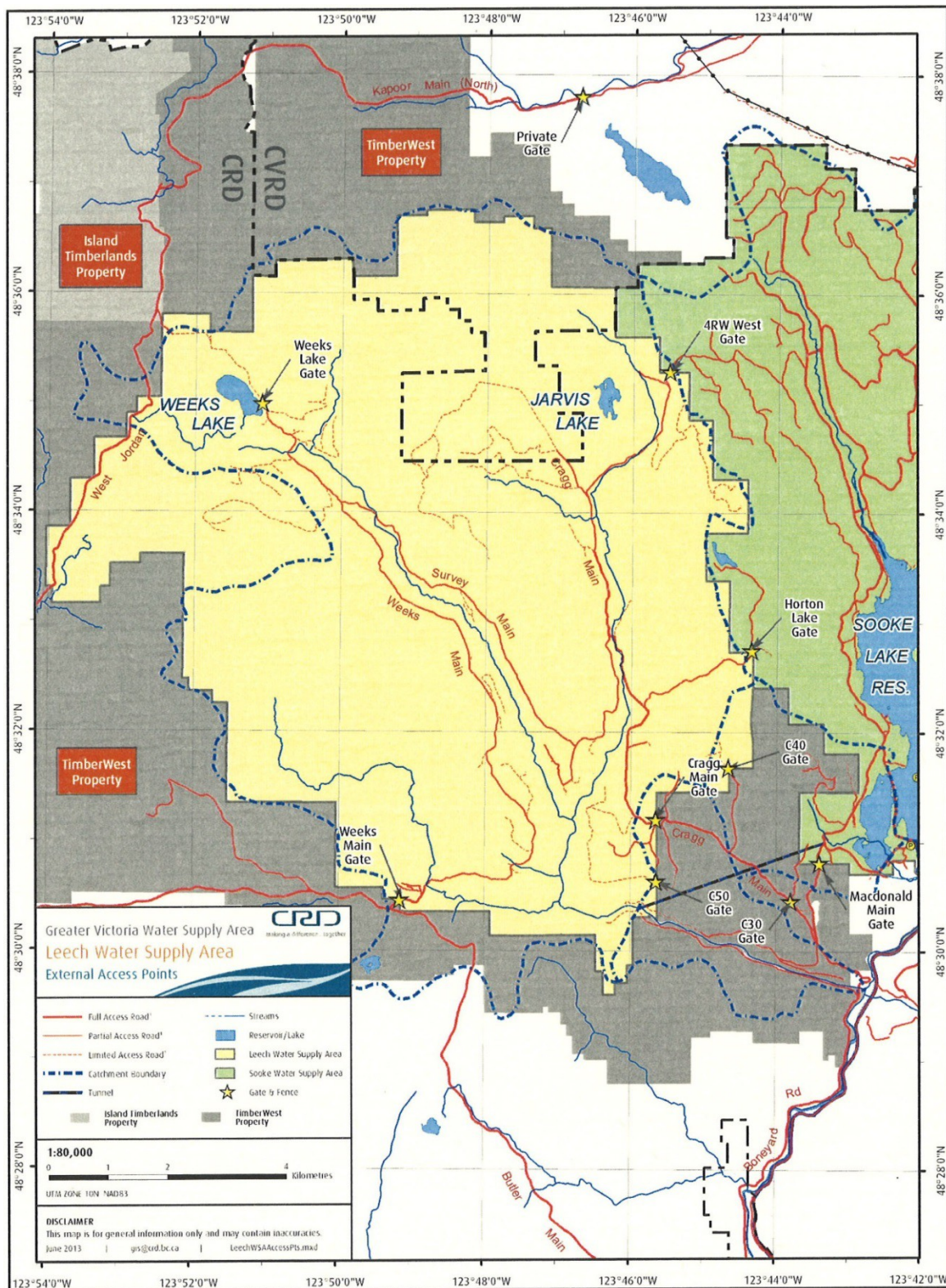
**Event page:** <https://www.facebook.com/events/489941037793570/>

## 8. WILL THE LEECH WATERSHED CLOSE TO THE PUBLIC?

### Background

The Greater Victoria Water Commission bought 8,794 hectares of land in the Leech watershed from TimberWest for \$59 million in 2007. They added another 840 hectare area around Week's Lake with the purchase of private forest land from Western Forest Products in April, 2010, for \$3,140,000. This later purchase was part of a 2,350 hectare land deal that included CRD Parks buying Sandcut Beach as well as the foreshore, industrial sites and forest lands near Jordan River for \$18.8 million dollars.





CRD map showing the Leech Watershed in yellow and the Sooke Watershed in green. Access to the Leech Watershed is through private forest lands owned by TimberWest.

### Update

On November 20, 2013, the Board of the CRD Regional Water Supply Commission considered a staff recommendation to close the entire Leech River Watershed to the public in response to reoccurring damage to fish bearing streams, dumping,

tree cutting, soil erosion from off road vehicles, discharge of fire arms and risk of wildfire. Most of the watershed is in the Juan de Fuca Electoral Area's Rural Resource Lands north of Jordan River, Shirley and Otter Point and can be accessed by Butler Main, Boneyard and other active and inactive logging roads in the area.

OPSRRA has concerns about the total closure of the watershed to the public and our President wrote to the CRD Commission with a request that the Leech Watershed become a protected area with limited public access permitted.

---

### **December 5, 2013**

I am writing on behalf of the Otter Point, Shirley and Jordan River Residents and Ratepayers Association (OPSRRA) in regard to the proposed closure of the Leech River Water Supply Area (WSA). Our association represents residents and ratepayers in the Juan de Fuca Electoral Area communities located west of Sooke.

Residents of our area have expressed through their Official Community Plans a wish to remain rural and promote the values of recreation and forestry rather than supporting large scale development. None of the residents in our area receive water service from the CRD water commission, yet are being asked to give up access to a large amount of our land base. The Leech Watershed has been used for generations for fishing, camping, hiking and other recreational pursuits by our local communities, tourists, First Nations and residents of Greater Victoria. While closure of the Leech watershed could be seen as a benefit to residents of Greater Victoria who receive water service, the decision has no apparent benefit to us and perhaps others.

The CRD agrees that the Leech River WSA will not be needed for water supply for decades and that limited access for camping, fishing, hiking or trail riding would not impact the water supply if strict rules were in place.

We therefore ask that the Greater Victoria Water Commission support the idea that the Leech River WSA be a protected area with limited access for specific permitted uses such as hiking, fishing, camping or trail riding rather than imposing a total closure. We would support an arrangement with TimberWest to enable access to the Leech River area.

---

In a separate letter to Director Hicks, our Association asked him to consider "bringing something to the table" in exchange for having the watershed remain open to the public. Our suggestions included:

- Designating the Leech Watershed a protected area with limited access, rather than a total closure;
- Preparing a plan to show how the area can be used by the local community in a responsible way and outlining ways to control the undesirable behaviours which concern the Water Commission;
- Involving the JDFEA Parks and Recreation Commission and the Economic Development Commission in the formation of such a plan;
- Working with others who say they benefit from having public access to the watershed such as local businesses, recreation organizations, First Nations and the broader outdoor recreation community.



## 9. **APPOINTMENTS TO JDFEA ADVISORY COMMISSIONS**

The following appointments were approved at the December 11, 2013, meeting of the Capital Regional Board of Directors on the recommendation of the JDFEA Regional Director.

### **JDFEA Parks and Recreation Advisory Commission for a two year term:**

Ken Douch	Otter Point
Charmian Bennett	Port Renfrew
Anne Boquist	Member at Large, Otter Point
Sid Jorna	Otter Point
Louise Paterson	East Sooke

### **JDFEA Agricultural Advisory Planning Commission:**

Dominique Bernardet	Shirley
Mary Alice Johnson	Otter Point
Nick Wilde	Shirley
Teresa Willman	Otter Point

Note: There are still five vacancies on this commission. Interested persons can contact JDFEA Planning Services for more information.

## 10. **THE DIFFERENCE BETWEEN JDFEA PARKS & RECREATION AND SEAPARC**

Understanding who provides park and recreation services in the Juan de Fuca Electoral Area (JDFEA) can be complicated. Here is a road map:

Both the JDFEA Parks & Recreation Department, and the Sooke and Electoral Area Parks & Recreation Commission (SEAPARC) provide services to the communities of East Sooke, Otter Point, Shirley, Jordan River and Port Renfrew. The JDFEA communities of Malahat and Willis Point receive their recreation services from the Juan de Fuca Recreation Commission, however SEAPARC and the JDFEA Parks & Recreation Department operate on a different governance model and provide different services. Following this okay so far?

**SEAPARC** operates as a Capital Regional District service and provides a wide range of recreational programs and services at its complex on Phillips Road in Sooke. It is responsible to an appointed Board of Directors with representation from both the JDFEA and the District of Sooke. Present members of the board are:

Wendal Milne	Mayor, District of Sooke
Bev Berger	Councillor, District of Sooke
Patrick Grove	resident District of Sooke
Jim Perkins	resident District of Sooke
Mike Hicks	Regional Director, JDFEA
Derek Bishop	resident Juan de Fuca Electoral Area.

The **JDF Parks & Recreation Department** is responsible to the CRD Parks Department, but has a locally appointed Parks and Recreation Commission which advises the Manager of JDF Parks & Recreation, the JDF Land Use Committee and the JDF Regional Director on park dedication for subdivision applications as well as advising the JDFEA on recreation services and park acquisition and maintenance.

## Cost and funding

**SEAPARC**'s cost, in 2013, to the JDFEA taxpayers of East Sooke, Otter Point, Shirley, Jordan River and Port Renfrew was \$254,596 for the recreation component and \$355,587 for the pool.

The recreation component of **JDFEA Parks & Recreation** is funded by the taxpayers of East Sooke, Otter Point, Shirley, Jordan River and Port Renfrew and cost taxpayers \$59,290 in 2013. The community parks component is shared by all the communities in the JDFEA and was \$158,830 in 2013.

The following chart provides more detailed information about cost per average household and cost per \$100,000 of assessed property value.

2013 JDFEA budget prepared by the JDFEA Regional Director				
	2013	2013	Per \$100,000 2013 Assessment	2013 Cost Per Average Household
JDF Recreation	\$58,130.00	\$59,290.00	\$16.71	\$4.21
JDF Community Parks	\$166,130.00	\$158,830.00	\$40.78	\$10.27
<b>JDF Parks &amp; Recreation Total</b>	<b>\$224,260.00</b>	<b>\$218,120.00</b>	<b>\$57.49</b>	
SEAPARC Recreation	\$255,020.00	\$254,596.00		
SEAPARC Pool	\$335,981.00	\$355,587.00		
<b>SEAPARC Total</b>	<b>\$591,001.00</b>	<b>\$610,183.00</b>	<b>\$43.62</b>	<b>\$173.00</b>

From the 2013 JDFEA budget prepared by the JDFEA Regional Director. More details at: <https://www.crd.bc.ca/about/about-the-region/juan-de-fuca/property-tax-budget-information-for-the-juan-de-fuca-electoral-area>

**Note:** Larry Hutchings retired as SEAPARC Manager in September. Steve Knoke has been appointed to the position effective December 2, 2013. Linda Finch, Program Services Manager, resigned effective December 20, 2013, to accept a new position in Vancouver.

More information about SEAPARC is available on their web site:  
<https://www.crd.bc.ca/seaparc/>

## 11. SHIRLEY FIRE PROTECTION SOCIETY AGM

Submitted to the newsletter:

*"The Society Annual General Meeting was held December 8, 2013. The President's, Treasurer's and Fire Chief's reports were received and approved. Under Old Business, an update was given on the Gaming Grant application intended to be used to purchase a new Jaws of Life. The application was turned down because it did not meet the requirement of serving the community on a broad basis. The Fire Fighters Christmas Party and funding for a Fire Fighters Association were discussed as New Business. Elections were held, and elected by acclamation were: Malcolm Taylor-President, Grant*

## 12. SHIRLEY FIRE RESCUE & EMERGENCY RESPONSE COMMISSION

Submitted to the newsletter:

*“The Commission held their Regular Meeting December 18, 2013. The minutes of the October 16, 2013 Regular Meeting were approved as amended. There was correspondence received and responded to and that correspondence will be attached to the January, 2014 Regular Meeting agenda package. The Treasurer’s and Fire Chief’s reports were received and approved. The Treasurer reported that there would be a \$16,000 surplus that could be put towards the purchase of a new Jaws of Life. The Fire Chief reported on callouts, membership and training, as well as the possibility of a new well and water tanks provided to the Department as an amenity from development. Under New Business the summary results of the survey for the proposed new Fire Hall were reviewed. The Commission will give the results to Director Hicks and they will make a recommendation on funding at the January, 2014 Regular Meeting once the results have been more thoroughly analyzed. There was discussion of the high accident rate at the Muir Creek hill corner. A motion was made to write a letter to the Ministry of Highways re: the concerns about the corner and accidents with the letter copied to Mike Hicks and John Horgan. The next Regular Meeting of the Commission is January 15, 2014 at 7 pm when the officers will be elected.”*

## 13. REGIONAL DIRECTOR'S GRANTS-IN-AID

The Juan de Fuca Electoral Area (JDFEA) has a budget for discretionary grants that allows the Regional Director to respond to requests from organizations and agencies which provide a service to residents of the JDFEA. These grants are recommended by the Regional Director and approved by the Electoral Area Services Committee of the Capital Regional District Board.

Budgets and Grants				
	2010	2011	2012	2013
Budget	\$40,710	\$38,500	\$40,000	\$40,000
Actual Granted	\$22,500	\$13,300	\$21,500	\$19,350

The 2014 budget won't be known until after it is approved by the CRD in April, 2014. This budget item is usually underspent and Director Hicks has indicated that he intends to continue that practice.

The Regional Director tries to disburse these discretionary funds in proportion to the population of each of the subareas in the JDFEA.

The CRD and the Juan de Fuca Electoral Area operate on a financial year that runs from April first to March 31. The following Grants in Aid were approved from April to December, 2013 with three months remaining in this fiscal year:

<b>Grants approved April to December 2013</b>	
Sooke Elementary School PAC*	\$2,334.00
Saseenos Elementary School PAC*	\$2,333.00
John Muir Elementary School PAC*	\$2,333.00
Shirley Farmers Market	\$500.00
Sooke Region Food CHI	\$3,500.00
Port Renfrew Chamber of Commerce	\$150.00
Willis Point Community Association	\$3,000.00
Sooke Canada Day Society	\$1,000.00
Sooke Fine Arts Society	\$2,000.00
Juan de Fuca Rural Publication Society ( <i>Rural Observer</i> )	\$2,000.00
Shirley Women's Institute	\$200.00
<b>Total</b>	<b>\$19,350.00</b>

- Grants to the three schools Parent Advisory Councils (PAC) are towards the cost of hiring school crossing guards and are in proportion to the percentage of children from the JDFEA attending these elementary schools in Sooke. The District of Sooke contributes the remainder.

More information about the JDFEA budget: <https://www.crd.bc.ca/about/about-the-region/juan-de-fuca/property-tax-budget-information-for-the-juan-de-fuca-electoral-area>

#### 14. **UPDATE: SHIRLEY & JORDAN RIVER OCP**

The Shirley/Jordan River Citizens' Official Community Plan (OCP) Review Committee held its second public meeting on December 4, 2013 at the Shirley Community Hall.

The Committee members:

Dominique Bernardet	Claire Denesovych
Sonja de Wit	Margaret Johnson
Wayne Jackaman	Pascale Knoglinger
Frank Limshue (representing TimberWest)	
Brenda Mark	Fiona McDannold

The Committee continued to explore earlier identified themes:

- Watersheds and water supplies protection
- Sensitive ecosystems and wildlife habitat protection
- Defining and preserving the rural character of the two communities.

June Klassen, Manager of JFDEA Planning Services, reported that Madrone Environmental Services has been contracted to perform the Sensitive Ecosystems Inventory (SEI) and mapping. She explained that Tracy Olsen, a community planner, has been hired as Facilitator for the Shirley/Jordan River and East Sooke OCP Reviews. Madrone Environmental will present the SEI methodology at the next meeting on January 22, 2014.

The Committee will conduct a Community Information Open House Sunday, January 26, 2014 from 1:00 to 4:00 pm at the Shirley Community Hall. The local

Girl Guides will serve complimentary veggie burgers and hot dogs from 12:00 to 1:00 pm. Shirley Delicious will provide pastries and coffee.

The Open House will include a Community Mapping exercise, an opportunity to comment on the local issues identified by the Citizens' Committee as well as background information and maps. CRD staff and members of the Shirley and Jordan River Citizens' Committee will attend to answer questions.

The next meeting is set for Wednesday, January 22, 2014 at 7:00 pm at the Shirley Community Hall. Tania Tripp, a biologist with Madrone Environmental Services, the consulting firm hired to undertake a Sensitive Ecosystem Inventory, will do a presentation on the methodology.

The CRD website is "under construction" and does not have links to current OCP review materials. If you require more information, contact the JFDEA Office 250-642-1500.

## 15. **UPDATE: JDF ADMIN SERVICES BUILDING**

The new administrative services building for the Juan de Fuca Electoral Area (in the Sooke Business Park in Otter Point) was completed three weeks early and is officially known as the **CRD/Local Area Services Building**.

Building Inspection, Planning Services and Parks and Recreation moved in on December 6, 2013, and opened for business on the ninth. Emergency Services and Search and Rescue will occupy their space later.

There will be an official opening of the building sometime in February when Regional Director Hicks and the staff will host an Open House for the public.

Mailing address:

3-7450 Butler Road  
Sooke BC V9Z 1N1

Email addresses, phone and Fax numbers remain unchanged.

Telephone: 250.642.1500 (staff local numbers will change)

Fax: 250.642.5274

Note: They're waiting on Telus to install a proper office phone directory. In the meantime, expect some difficulty getting to the person or department you want; press 0 for the operator.

## 16. **DID YOU KNOW THAT ...**

**The original B.C. Electric Company power line and right-of-way between Jordan River and Victoria was installed between 1909 and 1911 by the Vancouver Island Power Company?**

The power line was installed for the B.C. Electric Company to carry electricity from the Jordan River powerhouse to the growing City of Victoria. The original Jordan River power house, on the east side of the river, was eventually closed and a new facility built in 1971 on the west side of the river. In later years, as other sources of power were brought to the Island from the Mainland, the Jordan River Generating Station grid was linked to a 138kV grid that connects the Victoria, Colwood and Sooke substations. Power from the Jordan River station continues to supply 170 Megawatts of electricity to the Greater Victoria Area. It's also capable of providing electricity to the Sooke and Colwood substations in the event of a power outage on the main grid.

Before the construction of Diversion Dam and the Jordan River powerhouse began in 1909, the only way to get to Jordan River was by boat. With the advent of the power station and the bustling camp community that developed, there was pressure to extend the existing gravel road through Otter Point, and this was completed by 1912. The first vehicles were then able to make the trip from Sooke, along Otter Point Road and on to Jordan River. The newly installed power lines were visible from the road and were a landmark which ran through back yards and farmers' fields in Otter Point. Built on cedar poles, the power lines were located in a right-of-way that followed the northern edge of West Coast Road from Jordan River to Gordon's Beach and then followed the north-west side of Otter Point Road through to Sooke. Remnants of that route can still be seen on maps as long streaks through properties where the right-of-way previously existed.

The new B.C. Hydro right-of-way was built in the 1970s and is situated north of the original route. It is no longer visible from Highway 14 but still passes through some residential neighbourhoods in Otter Point.

Information for this month's **Did You Know That?** is from *Otter Point Heritage Sites & Areas of Historical Interest*, a soon to be released local history written by Arnie Campbell with Elida Peers' assistance. Elida is a historian with the Sooke Region Historical Society.

Do you have a question or historical information about Shirley, Jordan River or Otter Point that you want to share? Contact Arnie Campbell at 250-642-3113 or at [opsrra@gmail.com](mailto:opsrra@gmail.com)

## 17. OPSRRA SMALL BUSINESS LISTINGS

**Do you operate a small business?** Are you an OPSRRA member? OPSRRA is offering a free business listing service for members, on its web site: [www.opsrra.ca](http://www.opsrra.ca) We will list non-members for a suitable donation!

The purpose of this service is to provide an opportunity for businesses in Jordan River, Shirley and Otter Point to advertise their goods and services to their local community. We anticipate having listings for accommodation, farm produce, art, furniture-making, fishing charters, eco-tours, firewood, knitting, soaps, landscaping, bookkeeping, sewing, spas and more. More information, businesses already listed, and an on-line registration form are available on OPSRRA's web site ([www.opsrra.ca](http://www.opsrra.ca)) under **Business Listings**.

**Note:** OPSRRA does not accept responsibility for the services provided. Always check references and ask for confirmation of Work Safe B.C. Registration if applicable.

**Support local businesses. The OPSRRA web site has more information about the following business listings**

1001 Welding & Equipment Repair

Accent in Grooming

A Point of View B & B

ALM Organic Farm

Beaches West B & B

Bear Home Remodelling

Birds Edge Press  
Coastal Crunch Granola  
Eco Craft Lights  
Eagle Cove Beachfront Guest Suites  
Farmer Notary—Shawna Farmer, Notary Public.  
Full Circle Seeds  
Glen's Gardening Company  
Heron's Rest B & B  
"In A Fix" Bookkeeping & Accounting Services  
Jambo Pet Sitting Service  
Kemp Lake Store Cafe  
Knotty Beds by Nature and Cedar Surfboards  
Le Sooke Spa  
Malahat Farm Heritage Cottage  
Ocean Wilderness Inn  
Otter Point Beach House  
Otter Point Electrical Service  
Perfect Grade Plumbing  
Reflexology by Marlene Barry  
Road's End Construction  
Sandy's Drywall Ltd  
Stick in the Mud Coffee House  
Straitview Ridge Bed & Breakfast  
Three Sisters Farm  
Tugwell Creek Honey Farm  
Tugwell Creek Meadery  
Welcome Wagon  
Wildewood Custom Homes

## 18. **BACK ISSUES OF THE OPSRRA NEWSLETTER**

Back issues of the OPSRRA newsletter are available on the OPSRRA web site.

---

This monthly newsletter is prepared by the directors of OPSRRA. It is available to members by e-mail and to others on our web site: [www.opsrra.ca](http://www.opsrra.ca). To have an item you would like to have considered for placement in the newsletter, or make a comment about the newsletter, contact an OPSRRA director or email [opsrra@gmail.com](mailto:opsrra@gmail.com).

OPSRRA tries to verify the correctness of the information in this newsletter; if we got it wrong we will acknowledge that and make a correction as quickly as possible.

---